



## MALAYSIA

# EASTERN & ORIENTAL EXPRESS: FESTIVE MALAYSIA (TOUR CODE: 13980)

### STARTS AND ENDS

in Singapore

### TRAVEL PERIODS

23 Dec 24 & 23 Dec 25

### EXPERIENCE

Rail

### TRAVEL STYLE

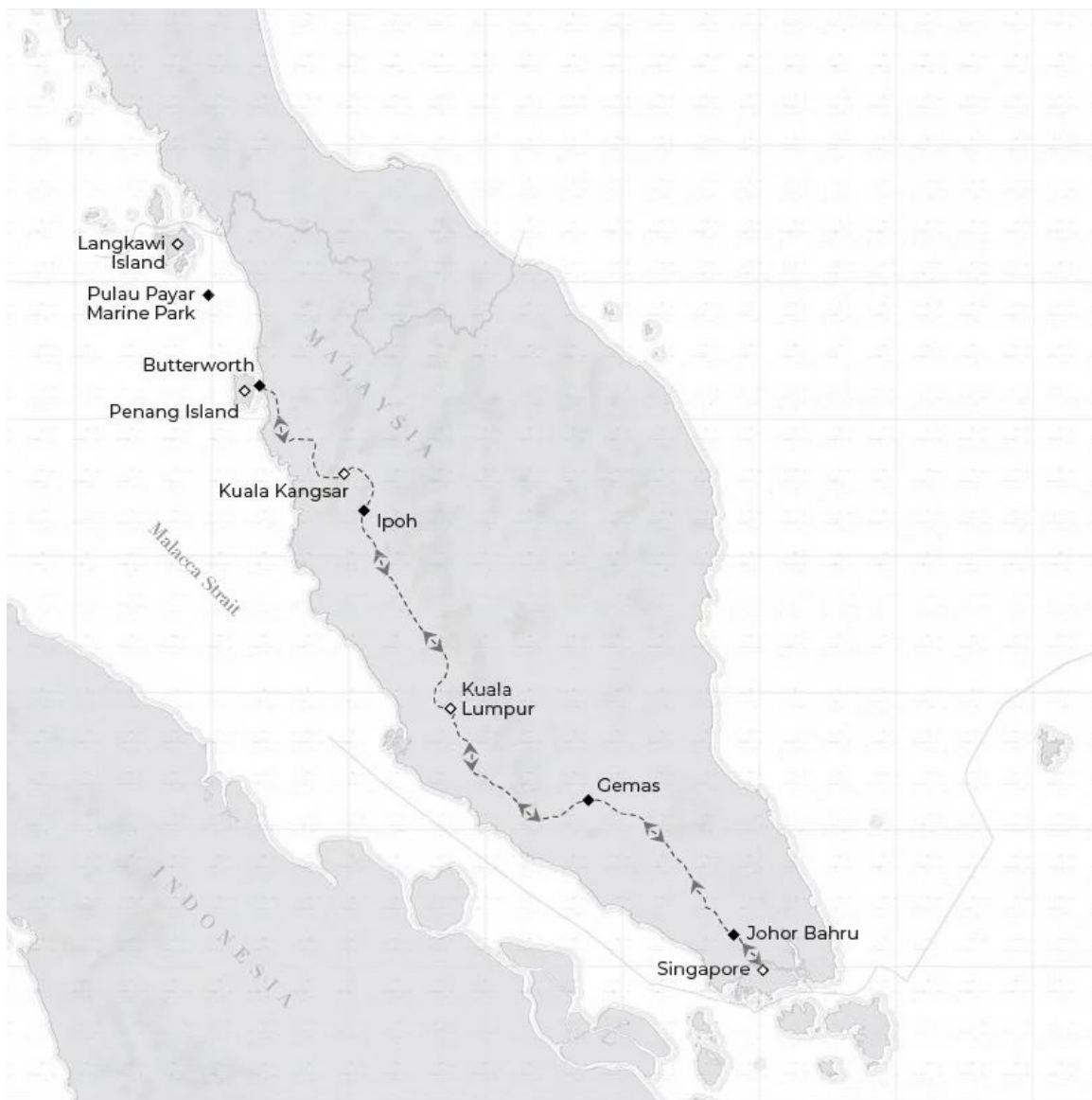
Rail Journeys

In December, Join the Eastern & Oriental Express in Singapore for the festive voyage of a lifetime. Start your festive luxurious journey through Malaysia and travel to Kuala Lumpur before stopping in Langkawi. Enjoy a day of refined activities before heading to Penang Island and Singapore, via Butterworth.

## Highlights

- Choose from a variety of excursions in Penang, exploring its culinary delights, cultural heritage, and artistic offerings. Discover the art of Peranakan cooking, visit temples and contemporary studios, or explore the picturesque streets of Georgetown at your own pace.
- Experience the natural wonders of Langkawi's Pulau Payar Marine Park with a luxury picnic set and a range of activities including snorkelling, paddle boarding, and island walks. Or choose to unwind with wellness experiences and enjoy cocktails and a BBQ on the island, creating memories of paradise.
- Christmas celebration in Penang Island with a choice of cultural tours or independent exploration, final celebratory evening with champagne, exquisite cuisine and fabulous entertainment

Embark on an unforgettable journey aboard the Eastern & Oriental Express, starting from the vibrant city of Singapore. As you traverse through enchanting destinations like Kuala Lumpur, Langkawi, and Penang, immerse yourself in the festive spirit that permeates every moment of the voyage. Indulge in luxurious relaxation onboard while also venturing out for exhilarating explorations, creating memories to cherish for a lifetime.



## INCLUSIONS

- All house wine, house spirits and local beer. Premium drinks and drinks ordered to your cabin will be an additional charge
- Daily continental breakfast served in your cabin and daily three-course lunch and afternoon tea
- Daily four-course dinner (seasonal table d'hôte menu, including coffee, tea and petits fours)
- Three nights aboard the Eastern & Oriental Express luxury train with a festive makeover and dedicated 24-hour steward service
- Excursion to Langkawi's Pulau Payar Marine Park with luxury picnic set and wellness activities
- Christmas celebration in Penang Island with a choice of cultural tours or independent exploration, final celebratory evening with champagne, exquisite cuisine, and fabulous entertainment
- Private transfers to/from Woodlands train station in Singapore at the start and end of tour.

## ITINERARY

Day **1**

Singapore Kuala Lumpur

Join the Eastern & Oriental Express at Woodlands Station, Singapore, and settle into your air-conditioned cabin where cherrywood panelling, Malaysian embroidery and Thai silks create the perfect sanctuary. Admire the lush passing landscapes as your steward serves an exquisite afternoon tea in your cabin. As the night slowly falls, dress for dinner in the dining car. Savour the flavours of locally inspired specialities, followed by engaging entertainment on board.



Day **2** Kuala Lumpur Langkawi

As you indulge in a delicious breakfast this morning, soak up the vistas while the train courses past the rice paddies and timeless rural villages of western Malaysia. After lunch, alight at Alor Setar station for a boat trip to Langkawi's Pulau Payar Marine Park, renowned for its vibrant underwater life, from parrot fish and angel fish to moray eels and grouper.

Here, you will be provided with a luxury picnic set and have an array of options to choose from. Unwind with wellness experiences such as a massage, meditation and tai chi, try paddle boarding and snorkelling or stride off on an island walk. With a friendly welcome from the locals and access to a bar for cocktails and a BBQ, this is a true glimpse of paradise. Return to the train where a delicious Christmas Eve dinner awaits, before starting the evening with lively celebrations and local entertainers in the Piano Bar Car.

Breakfast, Lunch, Dinner



Day **3** West-Coast Line Butterworth

Today, a merry Christmas is promised as you arrive in Penang Island, Malaysia's cultural melting pot. Islanders of all religion love a celebration – you're sure to spot glittering trees and decorations, and even hear a carol or two. Choose from three excursions to make the most of your time in Georgetown.

- The first is a discovery of the culinary art of Peranakan cooking, where you will visit a spice shop and traditional grocery stores to purchase herbs and vegetables, before trying your hand at making some enticing local dishes.
- The second suits those with a passion for culture and art, taking you to Georgetown Old Quarter to see stunning temples, a contemporary studio and an opera and puppet house.
- Lastly, you can choose to explore the city independently: with a map, a tri-shaw and a driver, navigate Georgetown's picturesque streets at your own pace. Your driver will take you anywhere you want to go, from grand attractions to hidden corners. Rejoin the train at Butterworth for lunch and a leisurely afternoon on board.

A final celebratory evening beckons. Pop the champagne, indulge in irresistible cuisine and enjoy fabulous festive entertainment. If you're still up shortly after midnight, glance at the views of Kuala Lumpur as the train passes through.

Breakfast, Lunch, Dinner



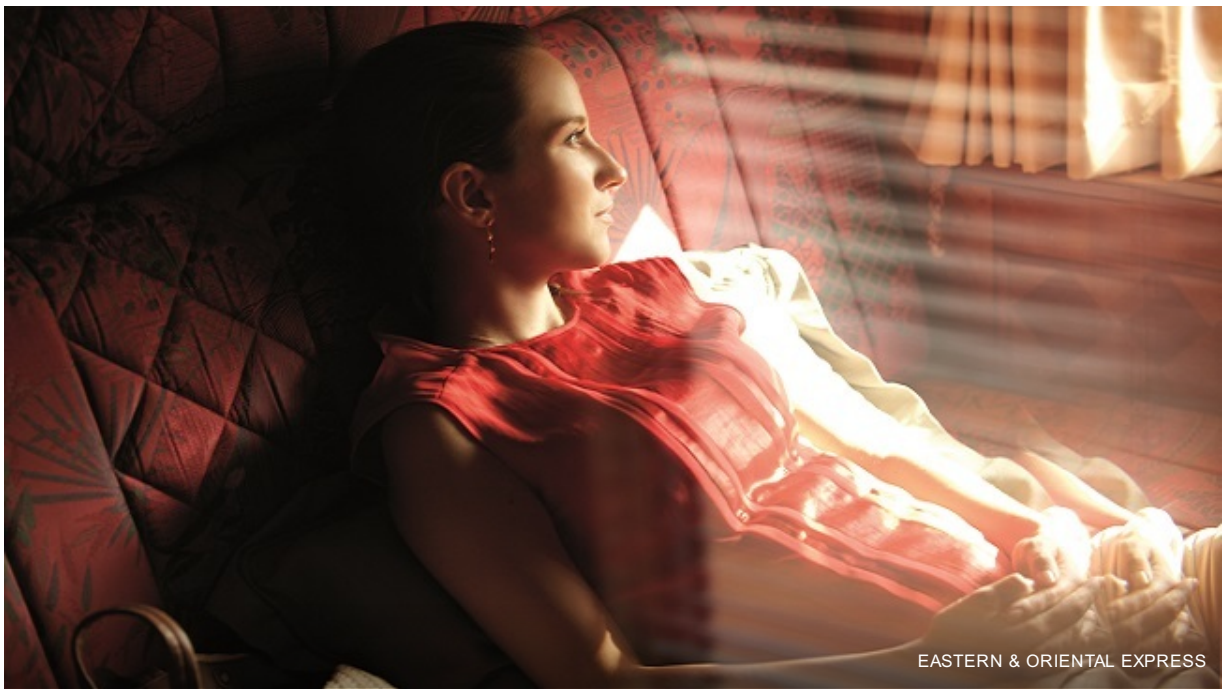
Day

4

## Johor Singapore

Enjoy your first breakfast of the New Year in your cabin or the Dining Car as you travel through the southernmost state of Johor, known for its beaches and rainforest. Soon, the Eastern & Oriental Express train crosses the strait to Singapore, where your Festive Malaysia journey comes to an end. Disembark the train with magical memories that you will cherish for a lifetime.

Breakfast



## ACCOMMODATION

### The Eastern & Oriental Express

UPGRADE AVAILABLE

A paradise of vintage charm, the twin bed setting of the Pullman cabins dazzles and delights. Relax onto plush seating by day as your cabin is flooded with light, courtesy of the two large windows. After the stars emerge, enjoy upper and lower berths cosy with crisp linens. Pullman cabins are fully air-conditioned and fitted with ensuite shower and WC.



### Room Upgrades

#### State Cabin

The light, airy State Cabins of the Eastern & Oriental Express connect you to the passing landscapes outside. Recline in spacious elegance by day; toast the day's adventures with a nightcap before settling into two single lower-level beds at night. Marvel at the unique designs of the State Cabins, as Malaysia rushes by. State cabins are fully air-conditioned and fitted with ensuite shower and WC.



Prices are dynamic based on travel dates. Please proceed to [Book Now](#) or [Contact Us](#) for details.

### Presidential Suites

The Presidential Suite offers supreme space with extra luxury touches and a large bathroom with enhanced amenities. Use the Wi-Fi onboard and set the ambience with your own music as you recline in the plush seating area. Presidential Suites are fully air-conditioned and fitted with ensuite shower and WC.



Prices are dynamic based on travel dates. Please proceed to [Book Now](#) or [Contact Us](#) for details.

## ADDITIONAL INFORMATION

### Excluded

- International airfares and taxes
- Domestic airfares and taxes, unless otherwise specified in our holiday package
- Visa expenses, processing and issuance fees
- Meals other than as specified in our holiday package
- Travel Insurance or expenses of a personal nature (mini-bar, phone call, laundry, etc.),
- Tips or gratuities to guides, drivers, porters, hotel, restaurant or boat staff, etc.
- Or any other travel expense that has not been included in our holiday package (Entrance tickets to sites and museums)